

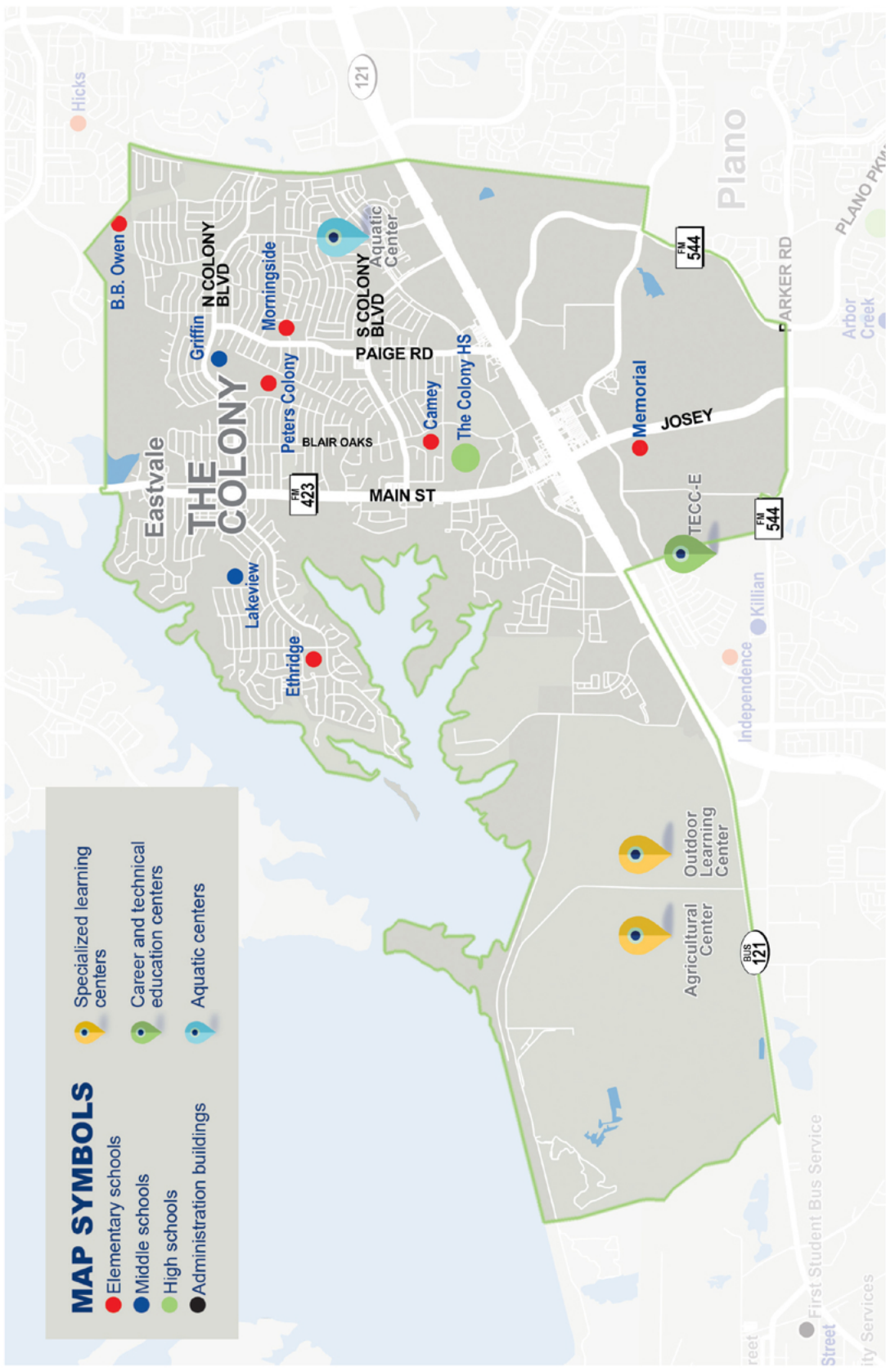
THE COLONY HIGH SCHOOL



HOME OF THE COUGARS

## MAP SYMBOLS

- Elementary schools
- Middle schools
- High schools
- Administration buildings
- Specialized learning centers
- Career and technical education centers
- Aquatic centers



Street  
● First Student Bus Service  
City Services

# The Colony High School Campus Profile

## SCHOOL HOURS ONLINE

8:20 a.m. to 3:35 p.m. **GRADES** 9th through 12th

[lisd.net/tchs](http://lisd.net/tchs) | [facebook.com/thecolonyhighschool](https://facebook.com/thecolonyhighschool) | [twitter.com/thecolonyhs](https://twitter.com/thecolonyhs)

### STUDENT INFORMATION

**2,038** Students  
**94.7%** Average daily attendance

### STAFF INFORMATION

**153.11** Total staff members  
**11.4** Average number of years teaching experience  
**7.2** Average number of years teaching in LISD schools

### PROFESSIONAL LEARNING

Total number of hours the staff spent developing their job skills last year

**11,883**

**63.9**

Average professional learning hours per Lewisville ISD staff member



### OBSERVATION

**912** Number of administrator visits to observe class instruction

**152** Average number of classroom visits per administrator

### At TCHS, we believe:

- We will accomplish anything we set our minds to
- We will set high expectations for students
- We will encourage students to reach beyond average and accept the challenge
- We will take unmotivated students and motivate them to learn
- We will start every day with a spirit of cooperation and teamwork, knowing this is the only way we can truly achieve greatness

At TCHS, we have state champions, student involvement is increasing and we engage our students in dynamic classroom learning experiences. Our theme is "The Power to Prevail," and this is especially important at TCHS Collegiate Academy, where we continue to reach all elements of our four-year plan, and strive for more accomplishments for our students.

### COLLEGE READINESS

Average combined scores for 2020 college entrance exams

**1056** | **20.8**  
SAT | ACT

Enrolled in AP, Pre-AP or dual credit courses **55%**

### GRADUATION RATE

Percent of graduates from the class of 2020

**97%**



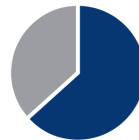
Percent of students whose test scores indicate they are college and career ready.



SAT Reading/Writing  
**68%**



SAT Math  
**44%**



ACT English Comp  
**57%**



ACT Algebra  
**41%**



ACT Social Science  
**43%**



ACT Biology  
**39%**



PSAT/NMSQT Reading/Writing  
**77.1%**



PSAT/NMSQT Math  
**48%**

## CLUBS

Clubs provide opportunities for students to engage in learning of their choice beyond the classroom.

Some of our clubs include American Red Cross, Circle of Friends, eSports, FCA, French Club, International Thespian, Mu Alpha Theta, Multicultural, National Honors Society, and Wakanda.



## What do our parents think?

In April 2021, parents were surveyed about the campus their child attends. Values represent the percentage of respondents who agree. Based on 183 responses.

Are satisfied overall	87.4%
The school staff cares	92.9%
Students know how to get help	83.6%
I know about my child's grades	90.7%
School is safe	90.2%
Students are happy	82.0%
Staff is encouraging	90.2%
Students who fall behind can get help	83.1%
School work is important	77.6%
Students feel welcomed	88.5%
School communicates effectively	86.3%
The staff is approachable	90.7%
They value culture and individual needs	84.7%

## ARTS AND ATHLETICS



**68%**  
Participation in athletics or physical education

**53%**  
Participation in fine arts such as band or theater

## PROGRAMS

Our campus offers unique programs to help our students become better learners, leaders, and friends.

Some of our programs include Academic Decathlon, Athletics, AVID, Band, Cheer, Choir, Collegiate Academy, Debate, Incubator, Japanese, JROTC, Model UN, Orchestra, PALS, PSAT Team, Student Council, Topcats, and Theater.

## AWARDS AND RECOGNITIONS

- 5th Place in State Academic Decathlon
- UIL Band Division 1 ratings: Marching, Concert and Sight Reading
- District and 5A Area Baseball Champions
- Bi-District Boys' Soccer Champions
- 10th place in state UIL: Cheer
- UIL Sweepstakes for Choir: Concert and Sight Reading
- 41 Collin College Associates Degrees earned for the Collegiate Academy Class of 2021
- Model UN Placed at International Harvard and UT Competitions
- 2nd in District Swim
- UIL One-Act Play won Zone
- Individual State Champion and Runner-up in Wrestling
- TCHS Track State qualifier and several Regional qualifiers

## What do our students think?

In April 2021, seniors were asked about their experiences in the district, future readiness and post-graduation plans.



Attend college	75.3%
Join the military or attend a service academy	5.8%
Work full time	22.6%
Attend technical or trade school	6.7%
Attain industry certification	3.7%
Other	4.6%
Well-prepared for the future	83.2%
Satisfied with their LISD education	80.8%

## THE COLONY HIGH SCHOOL

Home of the Cougars, The Colony, Texas

*Dr. Tim Baxter, Principal*





# Griffin Middle School Campus Profile

## SCHOOL HOURS ONLINE

8:55 a.m. to 4:10 p.m. **GRADES** 6th through 8th grade  
[lisd.net/griffin](http://lisd.net/griffin) | [facebook.com/griffinms](https://facebook.com/griffinms) | [twitter.com/griffin\\_ms](https://twitter.com/griffin_ms)

### STUDENT INFORMATION

**702** Students  
**96.0%** Average daily attendance

### STAFF INFORMATION

**73.95** Total staff members  
**11.9** Average number of years teaching experience  
**7.5** Average number of years teaching in LISD schools

### PROFESSIONAL LEARNING

Total number of hours the staff spent developing their job skills last year

**5,113**

**67.3**

Average professional learning hours per Lewisville ISD staff member

**258**

### OBSERVATION

Number of administrator visits to observe class instruction

**86** Average number of classroom visits per administrator

## At Griffin Middle School, we foster a:

Positive and Respectful environment that will help nurture each student as an Individual, and we celebrate the Diversity of our campus and Encourage students to achieve at levels beyond their beliefs.

The Griffin staff is committed to providing a rigorous and engaging academic experience while remaining attentive to the social and emotional needs that arise in these middle years.

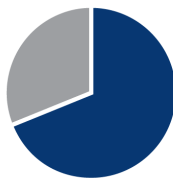
Our students have opportunities to excel academically, as well as explore interests such as athletics, fine arts, foreign language, community service, robotics and gaming and student government. As a campus, we are committed to providing authentic experiences to enrich and expand student learning by inviting individuals to speak on campus as well as traveling to businesses and other learning establishments in the community.

When students leave Griffin, they are prepared not only for a multitude of high school programs, but also for success in life well beyond the school years.

## ACADEMIC PERFORMANCE

### PSAT SCORES AND ADVANCED COURSES

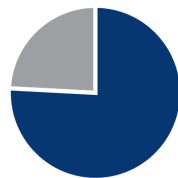
Percent of students whose PSAT test scores indicate they are college and career ready. Percent of student population who are enrolled in at least one advanced course.



PSAT Reading **69%**



PSAT Math **31.8%**



Pre AP/AP enrolled **76%**

## CLUBS

Clubs provide opportunities for students to learn beyond the classroom. Some of ours include Art Club, Circle of Friends, Community Connections, Crochet Club, Disc Golf, Garden Club, Golden Pride Dancers, Guitar and Bass Club, Military Studies Club, Pathfinder, and Student Council.

## COMMON SENSE SCHOOL



Earning the Common Sense School badge is a symbol of our school's dedication and commitment to helping students think critically and use technology responsibly to learn, create, and participate.

## PROGRAMS

Our campus offers unique programs to help our students become better learners, leaders, and friends. Some of ours include AVID, BlendEd Courses, Humanities, Student Council, NJHS, IMPACT Mentoring Program, PALS, and Summer STEM Program.

## ARTS AND ATHLETICS



**99%**  
Participation in athletics or physical education

**78%**  
Participation in fine arts such as music and art

## AWARDS AND RECOGNITIONS

- Robotics Styrofoam Recycling Program
- Environmental Excellence Award 2018
- Bight Bites Survey Winner three years in a row
- LISD Counselor of the Year 2017
- LISD First-Year Secondary Teacher of the Year Nominee 2018
- LISD Assistant Principal of the Year Nominee 2016 and 2017
- Stars of Distinction Award for the Exhibit of School Architecture 2016-2017



## What do our parents think?

In April 2021, parents were surveyed about the campus their child attends. Values represent the percentage of respondents who agree. Based on 138 responses.

Are satisfied overall	96.4%
The school staff cares	96.4%
Students know how to get help	92.0%
I know about my child's grades	91.3%
School is safe	96.4%
Students are happy	89.1%
Staff is encouraging	97.1%
Students who fall behind can get help	87.7%
School work is important	86.2%
Students feel welcomed	94.2%
School communicates effectively	89.1%
The staff is approachable	98.6%
They value culture and individual needs	93.5%

## GRIFFIN MIDDLE SCHOOL

Home of The Pride  
The Colony, Texas

*Heather Garrison, Principal*



# Lakeview Middle School

## Campus Profile

### SCHOOL HOURS ONLINE

8:55 a.m. to 4:10 p.m. **GRADES** 6th through 8th grade

[lisd.net/lakeview](http://lisd.net/lakeview) | [facebook.com/lakeviewms](https://facebook.com/lakeviewms) | [twitter.com/LakeviewMS](https://twitter.com/LakeviewMS)

### STUDENT INFORMATION

566	Students
96.4%	Average daily attendance

### STAFF INFORMATION

64.33	Total staff members
12.1	Average number of years teaching experience
6.5	Average number of years teaching in LISD schools

### PROFESSIONAL LEARNING

Total number of hours the staff spent developing their job skills last year

**4,878**

**69.7**

Average professional learning hours per Lewisville ISD staff member

### OBSERVATION

**415** Number of administrator visits to observe class instruction

**138** Average number of classroom visits per administrator

### The Lakeview Middle School commitment

Lakeview Middle School is a diverse learning community where all learners, children and adults find the support they need to maximize their potential. We are committed to:

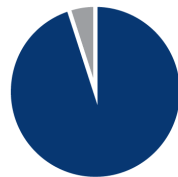
- Working in partnership to prepare our students to thrive
- Reaching the hearts of our students first, so they are ready and eager to be engaged in learning
- Building positive relationships between students, staff and the community



### ACADEMIC PERFORMANCE

#### PSAT SCORES AND ADVANCED COURSES

Percent of students whose PSAT test scores indicate they are college and career ready. Percent of student population who are enrolled in at least one advanced course.



## CLUBS

Clubs provide opportunities for students to learn beyond the classroom. Some of our clubs include National Junior Honor Society, Student Council, Family Consumer Science Club, Circle of Friends, Kindness Ambassadors, Colorguard, and Girls Athletic Development Club.

## COMMON SENSE SCHOOL

Earning the Common Sense School badge is a symbol of our school's dedication and commitment to helping students think critically and use technology responsibly to learn, create, and participate.



## PROGRAMS

Our campus offers unique programs to help our students become better learners, leaders, and friends. Some of ours include AVID, Circle of Friends, Buddy PE, Theatre Buddies, Leopard Time Advisory, and LEAP Days.



## ARTS AND ATHLETICS



**100%**  
Participation in athletics or physical education

**77%**  
Participation in fine arts such as music and art

## AWARDS AND RECOGNITIONS

- CREST Award
- Common Sense School
- ENERGY STAR certified school
- Raise Your Hand Texas Blended Learning Grant Recipient
- 2020 LISD Secondary Counselor of the Year
- 2019 LISD Secondary Teacher of the Year



## What do our parents think?

In April 2021, parents were surveyed about the campus their child attends. Values represent the percentage of respondents who agree. Based on 112 responses.

Are satisfied overall	85.7%
The school staff cares	92.9%
Students know how to get help	85.7%
I know about my child's grades	83.9%
School is safe	94.6%
Students are happy	85.7%
Staff is encouraging	92.0%
Students who fall behind can get help	86.6%
School work is important	78.6%
Students feel welcomed	87.5%
School communicates effectively	83.9%
The staff is approachable	86.6%
They value culture and individual needs	84.8%

## LAKEVIEW MIDDLE SCHOOL

Home of the Leopards  
The Colony, Texas

*Dr. Beri Deister, Principal*





# B.B. Owen Elementary School

## Campus Profile

### SCHOOL HOURS ONLINE

7:45 a.m. to 3 p.m. **GRADES** Pre-K through 5th grade  
[lisd.net/bbownen](http://lisd.net/bbownen) | [facebook.com/bbownenes](https://facebook.com/bbownenes) | [twitter.com/bbownenes](https://twitter.com/bbownenes)

### STUDENT INFORMATION

**278** Students  
**96.5%** Average daily attendance

### STAFF INFORMATION

**45.68** Total staff members  
**10.6** Average number of years teaching experience  
**8.5** Average number of years teaching in LISD schools

### PROFESSIONAL LEARNING

Total number of hours the staff spent developing their job skills last year

**3,575**

**71.5**

Average professional learning hours per Lewisville ISD staff member

**310**

**OBSERVATION**  
 Number of administrator visits to observe class instruction

**155** Average number of classroom visits per administrator

### The B.B. Owen commitment

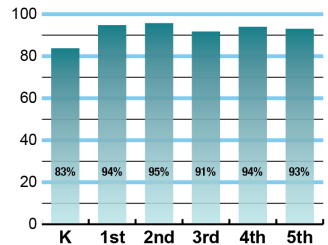
We are committed to high academic standards for all students. We are committed to building confident young boys and girls through academics, character development and real world experiences. We are committed to preparing students to meet and exceed the challenges of the 21st century. **#BBOPride**



### ACADEMIC PERFORMANCE

#### Istation by grade level

Lewisville ISD monitors students' reading progress through the Istation computer program. Teachers can quickly assess which students need help. This chart shows the percent of students reading on grade level or showing six months growth at the end of the school year.



## CLUBS

Clubs provide opportunities for students to engage in learning of their choice beyond the classroom. Some of ours include Running, Outdoor Adventure, Archery, Golf, Hiking, STEM Robotics, Rocketry and Maker Space, Art Club, Honor Choir, Kindness and Compassion, and Circle of Friends.

## COMMON SENSE SCHOOL



Earning the Common Sense School badge is a symbol of our school's dedication and commitment to helping students think critically and use technology responsibly to learn, create, and participate.



## PROGRAMS

Our campus offers unique programs to help our students grow. Some of ours include Second Step, Restorative Practices, Student Dens, Gifted and Talented, English as a Second Language and Communication Classes for students with moderate to severe autism.



## ARTS AND ATHLETICS

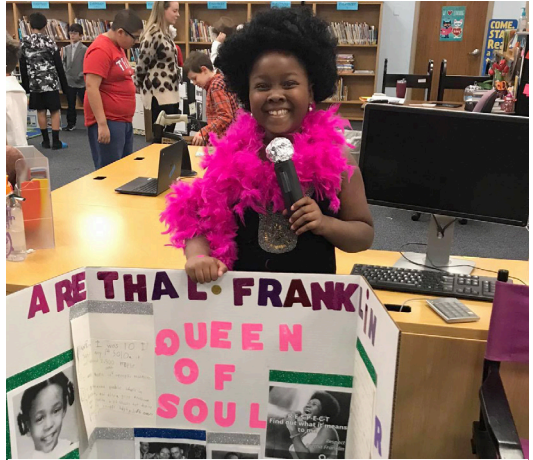


**100%**  
Participation in athletics or physical education

**100%**  
Participation in fine arts such as music and art

## AWARDS AND RECOGNITIONS

- Co-Champions of Speeding to Read 2017 and 2018
- Readers Choice Awards: Best School, Best Early Childhood Program, Best Extended Day Program, Best Tutoring Program
- Student PRIDE Awards: Positive Attitude, Responsibility and Respect, Integrity, Dedication, Effort



## What do our parents think?

In April 2021, parents were surveyed about the campus their child attends. Values represent the percentage of respondents who agree. Based on 102 responses.

Are satisfied overall	97.1%
The school staff cares	97.0%
Students know how to get help	95.1%
I know about my child's grades	91.2%
School is safe	100%
Students are happy	97.1%
Staff is encouraging	99.0%
Students who fall behind can get help	94.1%
School work is important	95.1%
Students feel welcomed	94.1%
School communicates effectively	96.1%
The staff is approachable	96.1%
They value culture and individual needs	96.1%

## B.B. OWEN ELEMENTARY SCHOOL

Home of the Bobcats  
The Colony, Texas

*Jennifer Spitzer, Principal*



# Camey Elementary School

## Campus Profile

**SCHOOL HOURS** 7:45 a.m. to 3 p.m. **GRADES** Pre-K through 5th grade  
**ONLINE** [lisd.net/camey](http://lisd.net/camey) | [facebook.com/cameyelementary](https://facebook.com/cameyelementary) | [twitter.com/Camey\\_ES](https://twitter.com/Camey_ES)

### STUDENT INFORMATION

**576** Students  
**96.7%** Average daily attendance

### STAFF INFORMATION

**62.2** Total staff members  
**9.5** Average number of years teaching experience  
**5.6** Average number of years teaching in LISD schools

### PROFESSIONAL LEARNING

Total number of hours the staff spent developing their job skills last year

**5,068**

**73.5**

Average professional learning hours per Lewisville ISD staff member



### OBSERVATION

**262** Number of administrator visits to observe class instruction

**131** Average number of classroom visits per administrator

### At Camey Elementary we believe:

- All students can be successful
- Rich experiences provide powerful learning
- High levels of learning can only occur in a safe, nurturing, and inclusive environment

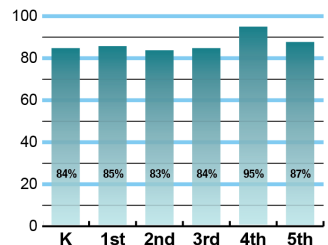
We are committed to ensuring every child has the academic and social-emotional skills needed to be successful. All students have the opportunity to engage in authentic-learning experiences including field trips, hands on learning, and interactive, language-rich lessons. By providing a safe and supportive learning environment, our students are encouraged to take risks while growing as a learner. We empower our students to take ownership of their learning through goal setting and celebrating success. The core values of respect and responsibility are reflected in all interactions within our community. Students from Camey Elementary are well prepared to thrive in a future they create.



### ACADEMIC PERFORMANCE

#### Istation by grade level

Lewisville ISD monitors students' reading progress through the Istation computer program. Teachers can quickly assess which students need help. This chart shows the percent of students reading on grade level or showing six months growth at the end of the school year.



## CLUBS

Clubs provide opportunities for students to engage in learning of their choice beyond the classroom.

Some of our clubs include Elementary National Honor Society, Student Council, Safety Patrol, Choir, and Robotics.

## COMMON SENSE SCHOOL



Earning the Common Sense School badge is a symbol of our school's dedication and commitment to helping students think critically and use technology responsibly to learn, create, and participate.



## PROGRAMS

Our campus offers unique programs to help our students become better learners, leaders, and friends.

Some of our programs include Dual Language, Restorative Practices, and Watch D.O.G.S.



## ARTS AND ATHLETICS



**100%**  
Participation in athletics or physical education

**100%**  
Participation in fine arts such as music and art

## AWARDS AND RECOGNITIONS

- The Colony Courier Leader Reader's Choice Favorite Public School
- ENERGY STAR certified school



## What do our parents think?

In April 2021, parents were surveyed about the campus their child attends. Values represent the percentage of respondents who agree. Based on 105 responses.

Are satisfied overall	96.2%
The school staff cares	99.0%
Students know how to get help	96.2%
I know about my child's grades	89.5%
School is safe	97.1%
Students are happy	98.1%
Staff is encouraging	97.1%
Students who fall behind can get help	89.5%
School work is important	93.3%
Students feel welcomed	95.2%
School communicates effectively	93.3%
The staff is approachable	96.2%
They value culture and individual needs	93.3%

## CAMEY ELEMENTARY SCHOOL

Home of the Cobras  
The Colony, Texas

*Angela Cortez, Principal*





# Ethridge Elementary School

## Campus Profile

### SCHOOL HOURS ONLINE

7:45 a.m. to 3 p.m. **GRADES** Kindergarten through 5th grade  
[lisd.net/ethridge](http://lisd.net/ethridge) | [facebook.com/EthridgeES](https://facebook.com/EthridgeES) | [twitter.com/EthridgeES](https://twitter.com/EthridgeES)

### STUDENT INFORMATION

404	Students
96.2%	Average daily attendance

### STAFF INFORMATION

42.35	Total staff members
12.8	Average number of years teaching experience
9.3	Average number of years teaching in LISD schools

### PROFESSIONAL LEARNING

Total number of hours the staff spent developing their job skills last year

**3,204**



Average professional learning hours per Lewisville ISD staff member

**127**

### OBSERVATION

Number of administrator visits to observe class instruction

64 Average number of classroom visits per administrator

### At Ethridge Elementary, we believe:

Excellence is the expectation. Teachers, parents, and our community work together in developing students who are creative thinkers, innovative problem solvers, and future leaders with a love of learning and a strong sense of independence and purpose.

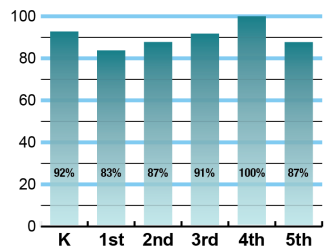
We believe:

- Every student is uniquely capable and deserves to be challenged each day
- Creative thinkers, problem solvers and future leaders are built by design and intentionality
- Independent, self-motivated learners have a strong sense of purpose and connectedness
- Fostering character development is vital to raising children who care about and for others
- A safe, nurturing, inclusive and flexible environment is key to growing our students intellectually, socially and emotionally
- An educated citizenry is essential for equal opportunity and a prosperous society
- Meaningful and relevant work, combined with powerful instruction, engages students in profound learning
- Critical thinking and problem solving today are necessary for students to be equipped for future challenges
- Education is the shared responsibility of the community

### ACADEMIC PERFORMANCE

#### Istation by grade level

Lewisville ISD monitors students' reading progress through the Istation computer program. Teachers can quickly assess which students need help. This chart shows the percent of students reading on grade level or showing six months growth at the end of the school year.



## CLUBS

Students engage in learning of their choice beyond the classroom through clubs. Ours include Running Club, Gardening Club, Listening Club, Art/Yarn Club, Book Club, EARTH Recycle Team, Eagle Patrol, Choir, Zoo Keepers, Drum Club, Student Council, Coding, Dance, Flag Corps, Chess, and Girls Who Code.

## COMMON SENSE SCHOOL



Earning the Common Sense School badge is a symbol of our school's dedication and commitment to helping students think critically and use technology responsibly to learn, create, and participate.



## PROGRAMS

Our campus offers unique programs to help our students become better learners, leaders, and friends. Some of ours include Character Counts, Safe and Civil, ETHOS (Ethridge Tutors Helping Other Students), and ESP (Eagle Success Program with recognition assemblies and character trait recognition Eagle cards).



## ARTS AND ATHLETICS



**100%**  
Participation in athletics or physical education

**100%**  
Participation in fine arts such as music and art



## What do our parents think?

In April 2021, parents were surveyed about the campus their child attends. Values represent the percentage of respondents who agree. Based on 91 responses.

Are satisfied overall	96.7%
The school staff cares	95.6%
Students know how to get help	94.5%
I know about my child's grades	93.4%
School is safe	98.9%
Students are happy	95.6%
Staff is encouraging	97.8%
Students who fall behind can get help	94.5%
School work is important	87.9%
Students feel welcomed	94.5%
School communicates effectively	94.5%
The staff is approachable	96.7%
They value culture and individual needs	92.3%

## AWARDS AND RECOGNITIONS

- Senator Jane Nelson School Spirit Award
- 21-Day Healthy Snack Challenge District and County Champions
- Mile Under the Lights The Colony Champions
- Spelling Bee Area Champion
- Yearly teacher LEF Grant recipients
- Voted #1 elementary school by The Colony Courier-Leader

## ETHRIDGE ELEMENTARY SCHOOL

Home of the Eagles  
The Colony, Texas

*Tasia Thompson, Principal*



# Morningside Elementary School

## Campus Profile

### SCHOOL HOURS ONLINE

7:45 a.m. to 3 p.m. **GRADES** Kindergarten through 5th grade  
[lisd.net/morningside](http://lisd.net/morningside) | [facebook.com/morningsidees](https://facebook.com/morningsidees) | [twitter.com/MorningsideES](https://twitter.com/MorningsideES)

### STUDENT INFORMATION

**342** Students  
**96.5%** Average daily attendance

### STAFF INFORMATION

**45.46** Total staff members  
**16.1** Average number of years teaching experience  
**11.6** Average number of years teaching in LISD schools

### PROFESSIONAL LEARNING

Total number of hours the staff spent developing their job skills last year

**3,794**

**75.9**

Average professional learning hours per Lewisville ISD staff member

**190**

**OBSERVATION**  
 Number of administrator visits to observe class instruction

**95** Average number of classroom visits per administrator

### At Morningside Elementary, we believe:

- All students can be successful both academically, socially and emotionally
- Students are given opportunities to be risk-takers, creative thinkers, and innovative learners
- Students are encouraged to persevere to their highest potential and become life-long learners
- We are committed to creating a safe educational environment where students are able to reach their full potential academically, socially, physically and morally

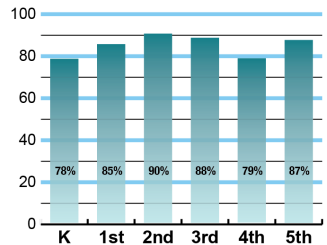
We are committed to maintaining high standards of excellence and dedicating our efforts so our students can obtain life-long skills and positive attitudes, which will empower them to be successful, life-long learners and respectful, responsible and productive citizens.



### ACADEMIC PERFORMANCE

#### Istation by grade level

Lewisville ISD monitors students' reading progress through the Istation computer program. Teachers can quickly assess which students need help. This chart shows the percent of students reading on grade level or showing six months growth at the end of the school year.



## CLUBS

Students engage in learning of their choice beyond the classroom through clubs. Ours include S.M.A.R.T. Girls, Makers Club, Choir, Guitar Club, Instrument Club, Morningside Musicals, Library Helper's Club, Library Genius Hour, Student Council, Mileage Club, Safety Patrol, and Morning Announcement Club.

## COMMON SENSE SCHOOL



Earning the Common Sense School badge is a symbol of our school's dedication and commitment to helping students think critically and use technology responsibly to learn, create, and participate.



## PROGRAMS

Our campus offers unique programs to help our students become better learners, leaders, and friends.

Some of our programs include Restorative Practices, and Safe and Civil Schools.



## ARTS AND ATHLETICS



**99%**  
Participation in athletics or physical education

**100%**  
Participation in fine arts such as music and art

## AWARDS AND RECOGNITIONS

- American Heart Association Heart Hero Awards for 6 staff members
- Received CPR Hands-Only kits for campus and district use from Reliant Energy and The American Heart Association
- 21-Day Challenge Award
- CREST Counselor's Award
- Fuel Up to Play 60 Award



## What do our parents think?

In April 2021, parents were surveyed about the campus their child attends. Values represent the percentage of respondents who agree. Based on 68 responses.

Are satisfied overall	92.6%
The school staff cares	97.1%
Students know how to get help	95.6%
I know about my child's grades	95.6%
School is safe	97.1%
Students are happy	94.1%
Staff is encouraging	95.6%
Students who fall behind can get help	91.2%
School work is important	89.7%
Students feel welcomed	95.6%
School communicates effectively	95.6%
The staff is approachable	94.1%
They value culture and individual needs	97.1%

## MORNINGSIDE ELEMENTARY SCHOOL

Home of the Mustangs  
The Colony, Texas

*Rita Bacque, Principal*





# Peters Colony Elementary School

## Campus Profile

### SCHOOL HOURS ONLINE

7:45 a.m. to 3 p.m. **GRADES** Kindergarten through 5th grade  
[lisd.net/peterscolony](http://lisd.net/peterscolony) | [facebook.com/peterscolony](https://facebook.com/peterscolony) | [twitter.com/PetersColonyES](https://twitter.com/PetersColonyES)

### STUDENT INFORMATION

**548** Students  
**96.4%** Average daily attendance

### STAFF INFORMATION

**69.79** Total staff members  
**12.3** Average number of years teaching experience  
**8.4** Average number of years teaching in LISD schools

### PROFESSIONAL LEARNING

Total number of hours the staff spent developing their job skills last year

**5,694**

**73.9**

Average professional learning hours per Lewisville ISD staff member

**364**

**OBSERVATION**  
 Number of administrator visits to observe class instruction

**121** Average number of classroom visits per administrator

### At Peters Colony Elementary:

We provide a real-world education that enables students to take their learning beyond the classroom. We believe this is accomplished through:

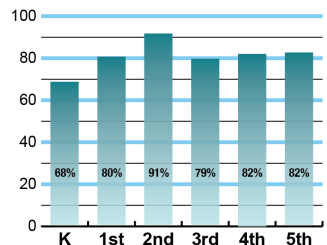
- Dual language programs in all grade levels teaching students academic and conversational English and Spanish
- Extracurricular activities that give students the opportunity to pursue their individual interests and student leadership possibilities
- Building relationships among school members, families, Communities in Schools and community mentors
- A diverse staff and student population
- Availability of multiple forms of technology for all students and staff



### ACADEMIC PERFORMANCE

#### Istation by grade level

Lewisville ISD monitors students' reading progress through the Istation computer program. Teachers can quickly assess which students need help. This chart shows the percent of students reading on grade level or showing six months growth at the end of the school year.



## CLUBS

Students engage in learning of their choice beyond the classroom through clubs. Ours include Chess Club, Ballet Club, Folklorico Club, Pep Squad, After School Choir, National Elementary Honor Society, Student Council, French Club, Junior Librarians, Running Club, Jump Rope Club, Book Club and Scrapbook Club.

## COMMON SENSE SCHOOL



Earning the Common Sense School badge is a symbol of our school's dedication and commitment to helping students think critically and use technology responsibly to learn, create, and participate.



## PROGRAMS

Our campus offers unique programs to help our students become better learners, leaders, and friends. Some of ours include Gifted and Talented, Restorative Practices, Extended School Day, full day Pre-K, Character Counts, Safe & Civil Schools, Communities in Schools, and Dual Language.



## ARTS AND ATHLETICS



**100%**  
Participation in athletics or physical education

**99%**  
Participation in fine arts such as music and art

## AWARDS AND RECOGNITIONS

- ENERGY STAR certified school
- Superior Rated Choir
- PTA Apple Award
- Counselor's CREST Award
- STUCO Honor Council
- Apple Distinguished School



## What do our parents think?

In April 2021, parents were surveyed about the campus their child attends. Values represent the percentage of respondents who agree. Based on 69 responses.

Are satisfied overall	98.6%
The school staff cares	97.1%
Students know how to get help	97.1%
I know about my child's grades	89.9%
School is safe	98.6%
Students are happy	95.7%
Staff is encouraging	98.6%
Students who fall behind can get help	97.1%
School work is important	97.1%
Students feel welcomed	98.6%
School communicates effectively	92.8%
The staff is approachable	95.7%
They value culture and individual needs	98.6%

## PETERS COLONY ELEMENTARY SCHOOL

Home of the Panthers  
The Colony, Texas

*Rebecca Chirinos, Principal*



# Stewart's Creek Elementary School

## Campus Profile

### SCHOOL HOURS ONLINE

7:45 a.m. to 3 p.m. **GRADES** Pre-K through 5th grade

[lisd.net/stewarts creek](http://lisd.net/stewarts creek) | [facebook.com/stewarts creek](https://facebook.com/stewarts creek) | [twitter.com/StewartsCreekES](https://twitter.com/StewartsCreekES)

### STUDENT INFORMATION

258	Students
96.3%	Average daily attendance

### STAFF INFORMATION

41.18	Total staff members
9.5	Average number of years teaching experience
4.6	Average number of years teaching in LISD schools

### PROFESSIONAL LEARNING

Total number of hours the staff spent developing their job skills last year

**3,250**



Average professional learning hours per Lewisville ISD staff member



### OBSERVATION

Number of administrator visits to observe class instruction

101 Average number of classroom visits per administrator

### Our commitment

Stewart's Creek Elementary is committed to excellence in education and meeting the needs of every individual, while providing a caring and respectful learning environment. We, as a partner with students, parents and the community, are dedicated to providing a strong academic foundation and helping our students to lead productive lives.

We are committed to:

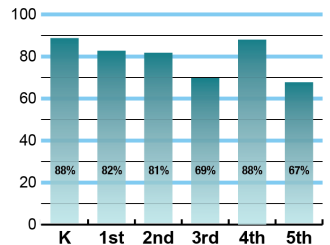
- Tailoring instruction to meet the needs of individual learners
- Teaching and learning through relevant experiences
- Developing partnerships with students, parents and the community
- Stimulating a love for learning

Our goal is to empower children with the knowledge that what they learn is in their control and to instill in them a life-long love of learning. We will also provide a safe and loving environment where all children can be successful!

### ACADEMIC PERFORMANCE

#### Istation by grade level

Lewisville ISD monitors students' reading progress through the Istation computer program. Teachers can quickly assess which students need help. This chart shows the percent of students reading on grade level or showing six months growth at the end of the school year.



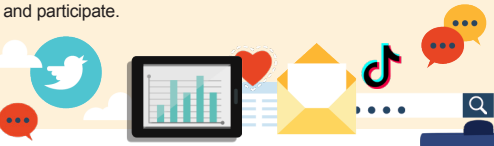
## CLUBS

Students engage in learning of their choice beyond the classroom through clubs. Ours include Art Club, Bluebonnet Book Club, Choir, Dance Club, Flag Etiquette, Garden Club, Kindness and Compassion Club, Mile Club, Pokemon Club, Robotics, Stallion Greeters, Student Council, and Volleyball.

## COMMON SENSE SCHOOL



Earning the Common Sense School badge is a symbol of our school's dedication and commitment to helping students think critically and use technology responsibly to learn, create, and participate.



## PROGRAMS

Our campus offers unique programs to help our students become better learners, leaders, and friends.

Some of our programs include Multiage Instruction, and after school clubs.



## ARTS AND ATHLETICS



**99%**  
Participation in athletics or physical education

**99%**  
Participation in fine arts such as music and art

## AWARDS AND RECOGNITIONS

- Staff members are requested to present at the TCEA annually
- First division UIL Choir trophy for seven consecutive years
- Multiage K-1 Virtual Zoo internationally recognized
- Multiage classes internationally recognized for innovative instruction
- ENERGY STAR certified school
- Teacher grant recipients for six consecutive years



## What do our parents think?

In April 2021, parents were surveyed about the campus their child attends. Values represent the percentage of respondents who agree. Based on 62 responses.

Are satisfied overall	98.4%
The school staff cares	98.4%
Students know how to get help	98.4%
I know about my child's grades	96.8%
School is safe	98.4%
Students are happy	98.4%
Staff is encouraging	96.8%
Students who fall behind can get help	95.2%
School work is important	93.5%
Students feel welcomed	96.7%
School communicates effectively	91.9%
The staff is approachable	96.8%
They value culture and individual needs	93.5%

## STEWART'S CREEK ELEMENTARY SCHOOL

Home of the Stallions  
The Colony, Texas

*Andrea Smith, Principal*





Visit us online for more information about the best schools in Texas.



[lisd.net/realtor](https://lisd.net/realtor)

